

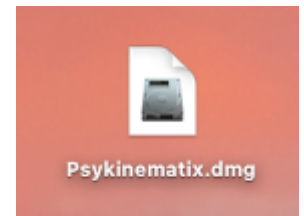


Getting Started with Psykinematix

Getting started with **Psykinematix** is easy. This first tutorial provides step-by-step instructions to install **Psykinematix**, perform the initial setup, and run experiments.

Installation

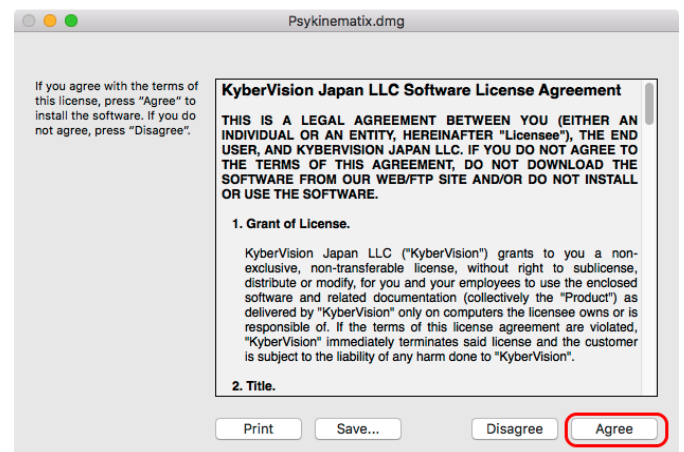
After downloading the **Psykinematix.dmg** file, locate it on your computer (typically on the desktop or in the Downloads folder) and double-click on its icon to expand this Installation Disk Image.



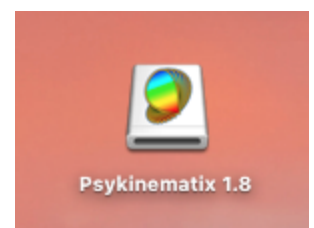
An installation window will open (it may have opened automatically after the download if your browser is configured to do so) and display the terms of the Software License Agreement.

Read the Software License Agreement and click on **Agree** if you agree with the terms of use.

To install and use Psykinematix, you must agree to these terms.



The DMG file will uncompress and then appear as an installation disk on your desktop. Double-click this icon to view its content if it did not automatically open.





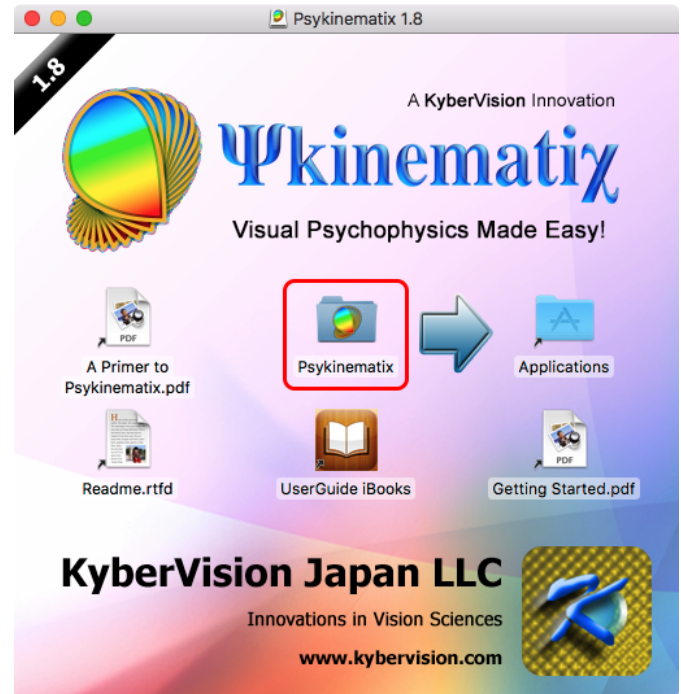
A KyberVision Innovation

Ψkinematix

Visual Psychophysics Made Easy !

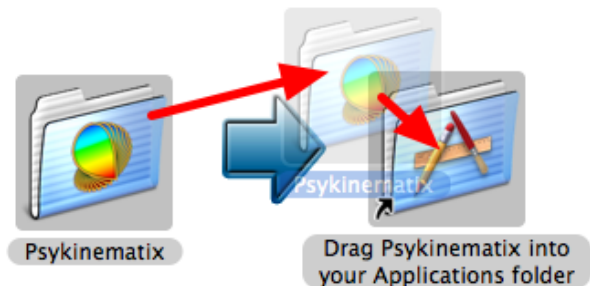
This Installation Disk contains a **Psykinematix** folder as well as some documentation about Psykinematix. These files will be automatically copied to your computer during the installation.

Before starting the installation, you should have a look at the **Readme** file to learn more about the latest system requirements and known issues.

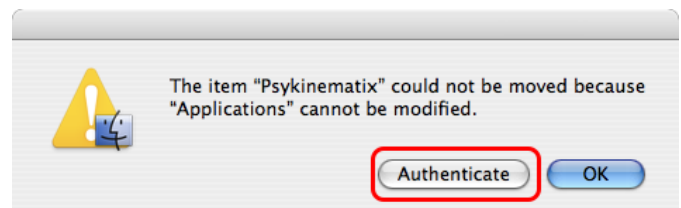


To install, simply drag the **Psykinematix** folder into the folder entitled **Drag Psykinematix into Your Applications Folder** (this is a shortcut to your actual **Applications** folder in your system partition).

Visual Psychophysics Made Easy !



If you are not currently logged in as an Administrator, you need to authenticate to install Psykinematix in your computer's **Applications** folder. Click on **Authenticate** and type your Administrator name and password.



If you don't have Administrator access, you can still install Psykinematix by dragging the folder on your desktop. However, only you will be able to run Psykinematix.



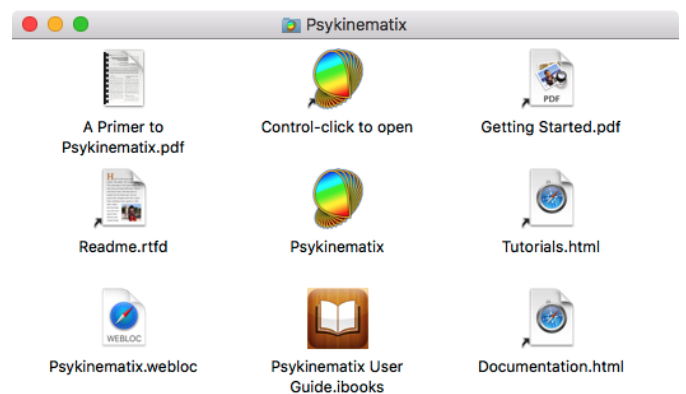
After the **Psykinematix** folder is copied onto your hard disk, you can eject the installation disk.

You may keep the **Psykinematix.dmg** file in case you need to reinstall Psykinematix (otherwise you will need to redownload that file from Psykinematix web page).



Locate the **Psykinematix** folder on your hard drive and open it. This folder contains:

- The **Psykinematix** application
- A readme file
- This tutorial, **Getting Started**,
- Shortcuts to the built-in HTML documentation and tutorials
- A Primer article that introduces Psykinematix you may refer to when publishing a study
- The User Guide in iBooks textbook format (you can open it using Apple's iBooks software on your Macintosh computer or drag this file into the Books section of iTunes & sync with your iOS device)





A KyberVision Innovation

Ψkinematix

Visual Psychophysics Made Easy !

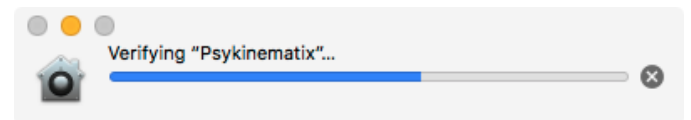
For easy access to **Psykinematix**, you may drag it to the dock.



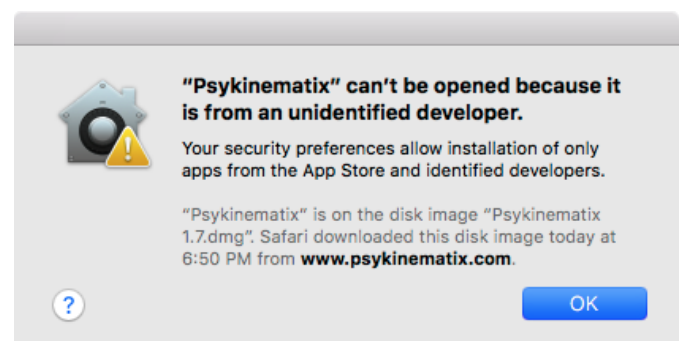
Launching Psykinematix

To launch Psykinematix, double-click on its icon inside the folder or click on its icon in the dock.

On first launch, your computer operating system may first verify the integrity of the Psykinematix software and then display a message about the software being from an unidentified developer.



In that case, click on the **OK** button to acknowledge and control-click on the Psykinematix icon, then select the **Open** option. The above message will not be presented anymore in the subsequent launches.

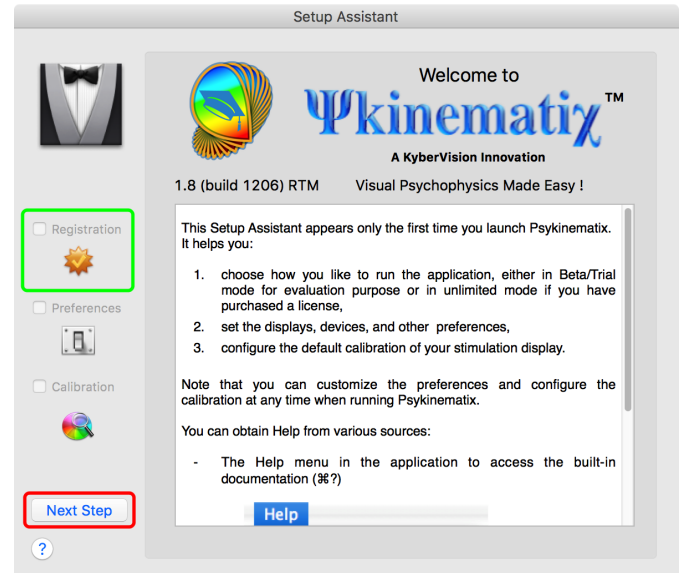




Setup Assistant at First Launch

The first time Psykinematix opens, you will be presented with the Setup Assistant which helps you go through registration, preference selection, and calibration.

After reading the information about how to access the Help documentation, click on **Next Step** to start the registration process.



The registration process sets the mode in which the application is running. Psykinematix can run on a trial basis with full functionality for 15 days. After this trial period, it converts to a demo version with limited functionality. It can be re-activated with unlimited and full functionality on purchase of a user license.

Click on **Set Registration**.





You may be asked to enter an Admin credential (name & password).

To prevent an activation issue... Type your password to allow this.

Name:

Password:

Cancel OK

Click on **Trial** to activate the Trial mode. If you have already received your licensing information, you can register now your license by filling in your name, email and license number and click on **Activate**; it will only take a few seconds to register and activate your copy through an internet connection.

ADMIN USERS ONLY: To "Activate" or "Deactivate" Psykinematix on this computer, enter the registration information exactly as it appears on your purchase receipt. ALL USERS: Click "Beta/Trial" to evaluate Psykinematix for a limited time.

Full Name:

Email:

License Number:

Copyright © 2006-2013 KyberVision
Email: info@psykinematix.com

Trial Purchase Activate

If you select the Trial mode, you are presented with a window indicating the number of remaining trial days. Click on **OK** to return to the main window.

Trial Activation

You can now evaluate Psykinematix for a period of 15 days.

OK

Click on **Next Step** to move to Preferences.

You are then presented with a summary of the available preferences. You should go through each of the preference sets to get accustomed to them.

To modify or view the preferences in each set, click on **Set Preferences** or the blue links in the summary.

Setup Assistant

Preferences

Set Preferences

Registration Preferences Calibration Quit ?

Preferences allow you to customize various components (such as display, response and I/O devices, audio, etc) to suit your experimental requirements, and to specify the default settings for each newly-created experiment.

No change is mandatory at this setup stage. Preferences can be modified at any time by selecting the "Preferences..." item in the application menu.

Note that some preferences may not be customizable in this version.

ADMIN: Password for unlocking: set a password if you wish to prevent accidental changes to the calibration configuration, experiments settings, etc.

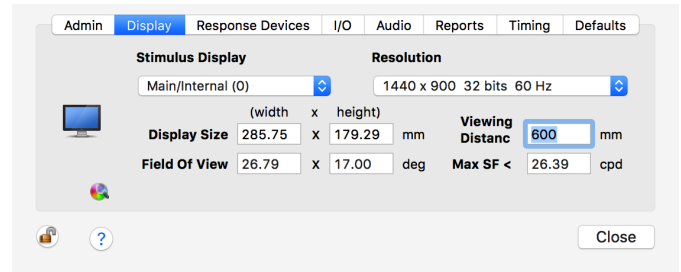
Check for updates: check this option to be automatically and regularly notified of any available updates.

Calibration warning: set the delay in days before emitting a warning about too old calibration configurations.

DISPLAY:



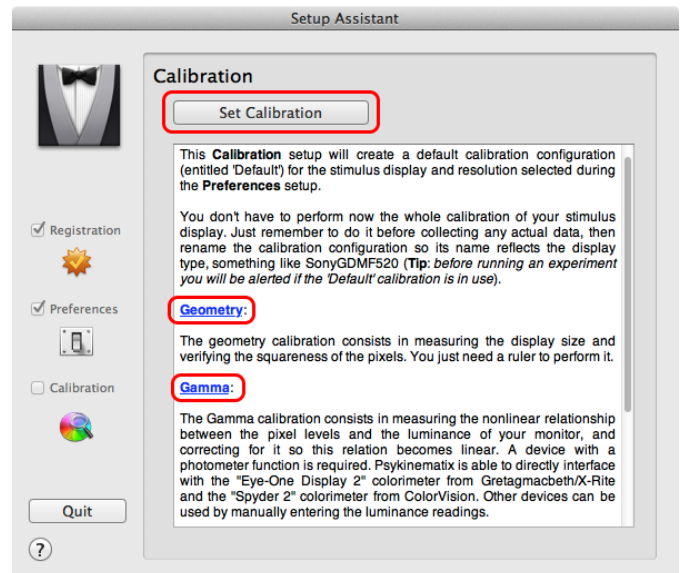
Note that you don't have to modify or check all the preferences immediately. You will be able to edit them at any time later by selecting **Preferences** in the **Psykinematix** menu, or by pressing the "⌘-" keystroke.



When you have finished with the preferences, close the preferences panel and click on **Next Step** to move to Calibration.

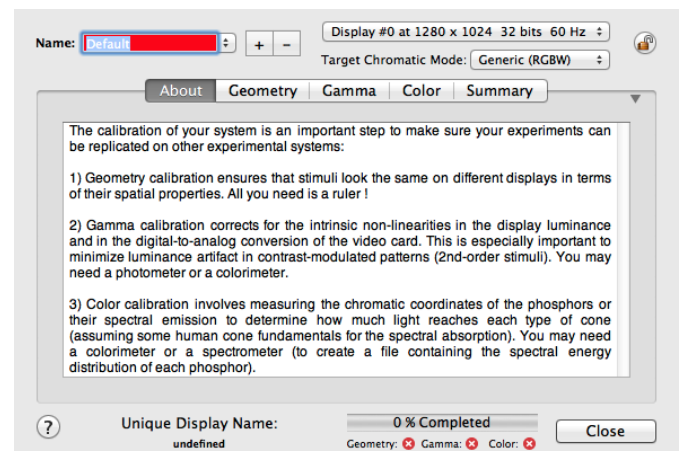
You are presented with a summary of the calibration process. You should go through each of the calibration stages to get accustomed to them.

To modify or view the calibration for each stage, click on **Set Calibration** or on the blue links.



As with the preferences, you don't have to modify or check all the calibration configurations immediately. However, given the importance of the calibration process, Psykinematix comes with a [dedicated tutorial](#) you should not skip.

When you have finished with the calibration, close the calibration panel and click on **Next Step** to move to the final setup window.

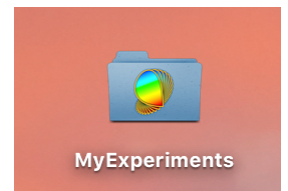
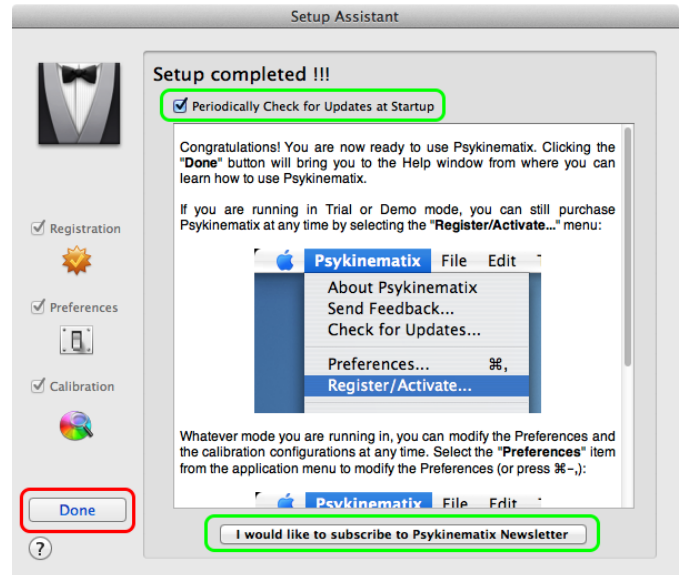




The last panel provides some final information and allows you to indicate whether to check for updates on a regular basis. We recommend leaving the box checked so you stay informed about the latest releases with bug fixes, enhancements, and new features. You can also subscribe to the Psykinematix Newsletter to learn about other related news (new tutorials, downloadable experiment and stimulus examples, etc.).

When you have completed the setup, click on **Done**. Don't worry if you have skipped some steps; you can always modify your Psykinematix setup later on. Note that if you quit the setup process before it is completed, none of the modifications will be saved so you will have to go through the Setup Assistant again at the next launch.

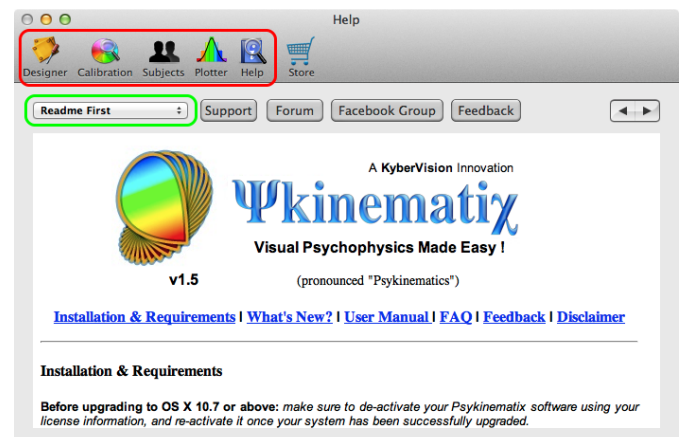
Note that at first launch, a folder entitled **MyExperiments** is also created on your desktop. This is where your experimental session files will be stored by default. Make sure to back up this folder regularly so you don't lose any experimental data!



Learn How to Use Psykinematix

After the **Setup Assistant** disappears or on subsequent launches, you are first presented with the **Help** panel. From the toolbar, you can access all other components of Psykinematix to perform experiment design, calibrate your display, manage subjects, groups and sessions, and plot and analyze session data.

Now it is time to learn how to use **Psykinematix**. The **Help** panel provides access to all the built-in documentation. To explore Psykinematix

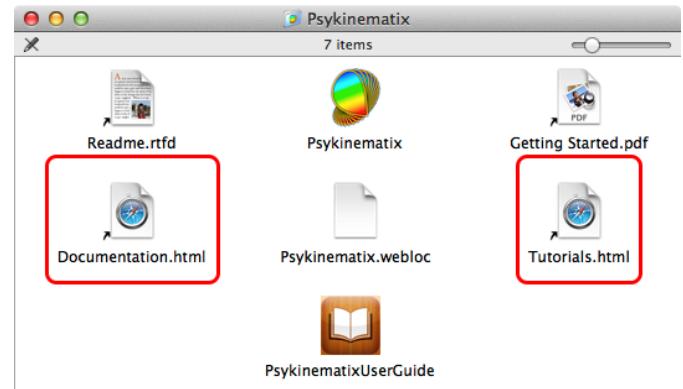




capabilities, select a section from the pop-up menu and follow the links according to your interests.

You can also browse the documentation from the HTML shortcuts available in the Psykinematix folder.

Starting with the tutorials is the best way to learn about Psykinematix in just minutes! You can access them in 3 ways:

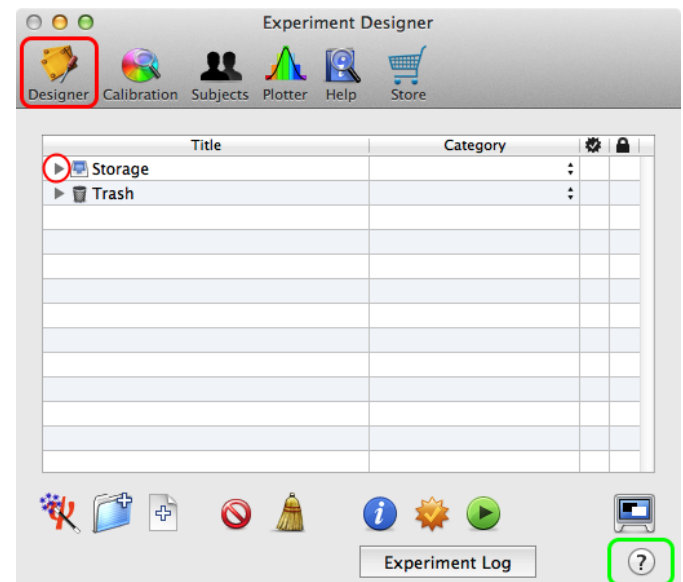


- 1) Via the **Tutorials** HTML file in the Psykinematix folder
- 2) From the Help component shown above
- 3) From an [online version of the tutorials](#) which may be more up-to-date

Experiment Designer

The **Experiment Designer** is the place where experiments are created and stored in Psykinematix. Some stimulus and experiment examples, located in the **Storage** area of the **Designer** panel, are already included. Click on the **Designer** icon in the toolbar to access the **Designer** panel, and then click on the small arrow in front of the **Storage** entry to reveal its contents (*Tip: Press the Option key while clicking to expand the whole hierarchy*).

Note the small question mark button (?) highlighted in green in the bottom right-hand corner: wherever this button appears, clicking on it provides some contextual help through the Mac OS X Help Viewer application.

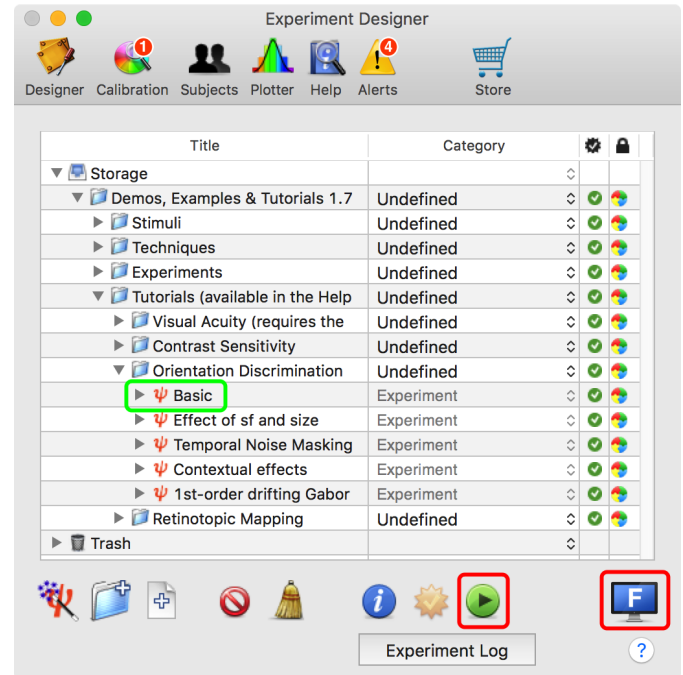




To test any of the provided examples, select the entry with a red psi mini-icon and click on the **Run** icon (*Tip: Each type of event is associated with the particular mini-icon in front of it*).

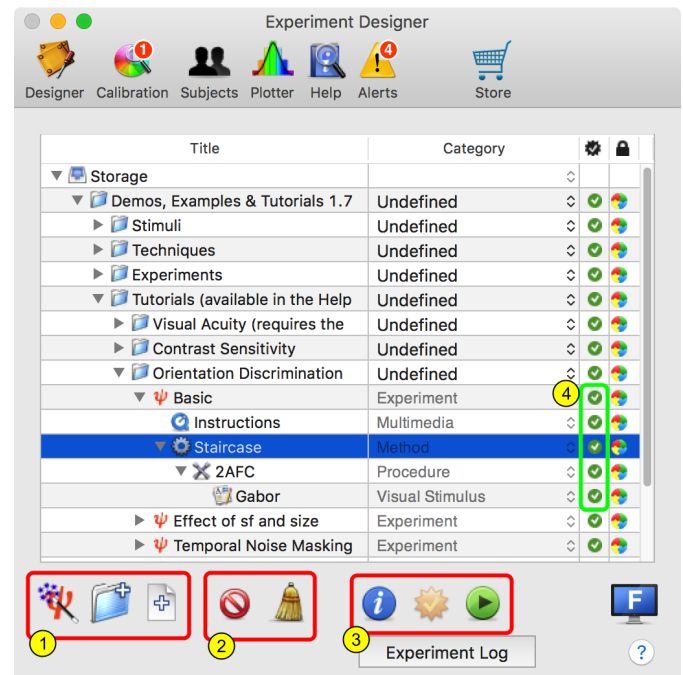
To abort any running experiment, press the **Esc** key of the main keyboard.

The last icon in the bottom toolbar allows you to switch between the windowed and the full screen mode when running an experiment (Note: Switching to full screen is disabled in the demo version).



Other icons in the bottom toolbar allow you to:

- 1) Add new groups or simple events, or create "canned" experiments using the wizard tool
- 2) Delete the events or clean up the trash (*Tip: Events are not immediately deleted but are simply moved to the trash until it is cleaned up*)
- 3) Edit the event properties or check the validity of the experiment description (*Tip: checking the experiment updates the status indicator (4) for each event to help with troubleshooting design or run-time problems*)



Finally have a look at the other [tutorials](#) to learn how to design experiments using Psykinematix. Each tutorial provides a difficulty rating and a duration estimation.